

A woman is seated on an ornate chair, which is split vertically into two contrasting halves. The left half is in grayscale, showing the woman's face, long dark hair, and a black sleeveless top. The right half is in vibrant color, showing her skin, a bright pink top, and the chair's upholstery. The chair has a gold-colored frame with intricate carvings. The background is a plain, light-colored wall.

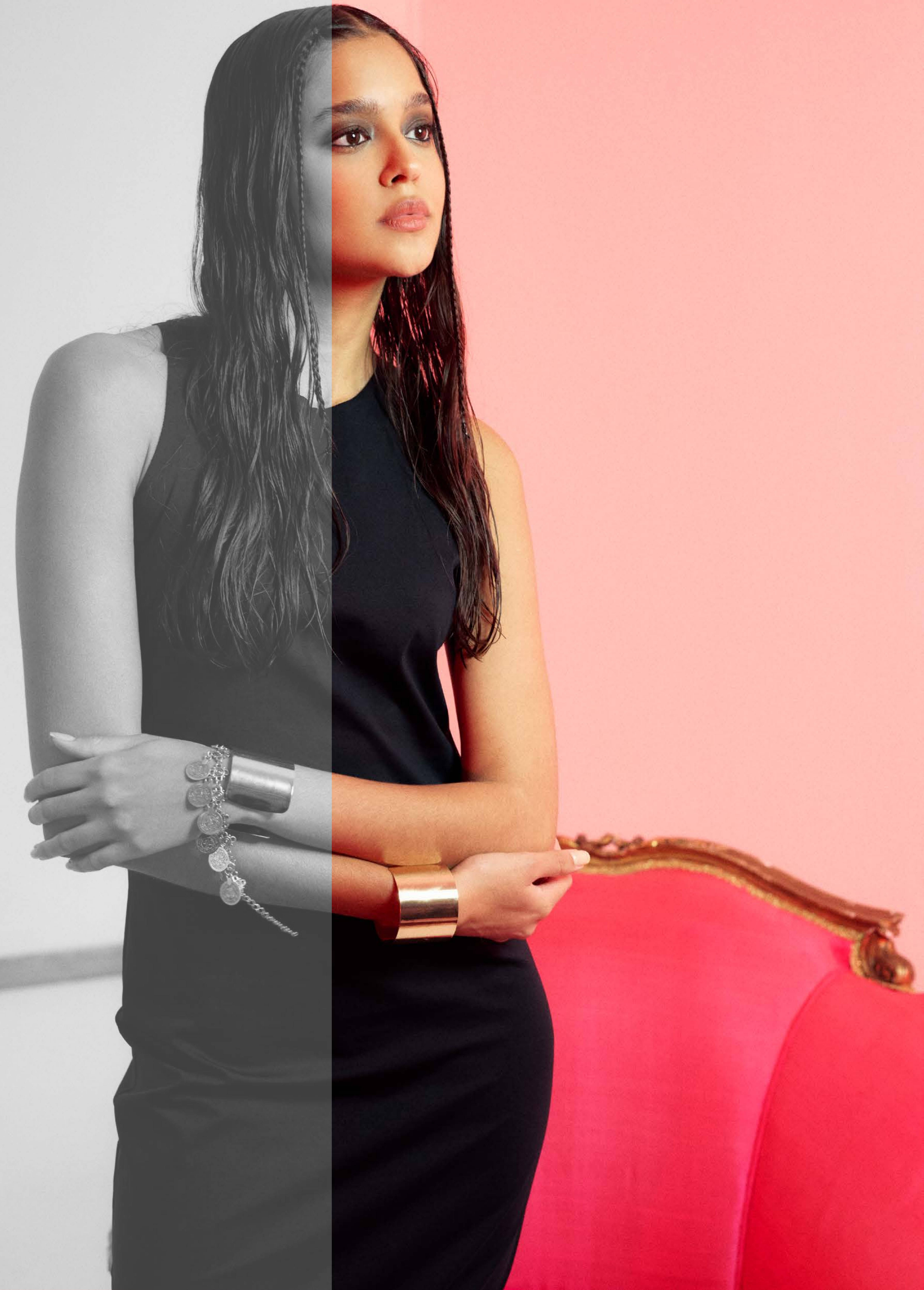
**B-YU**<sup>®</sup>

SPRING SUMMER 2025





















**B-YU**<sup>®</sup>  
SPRING SUMMER 2025









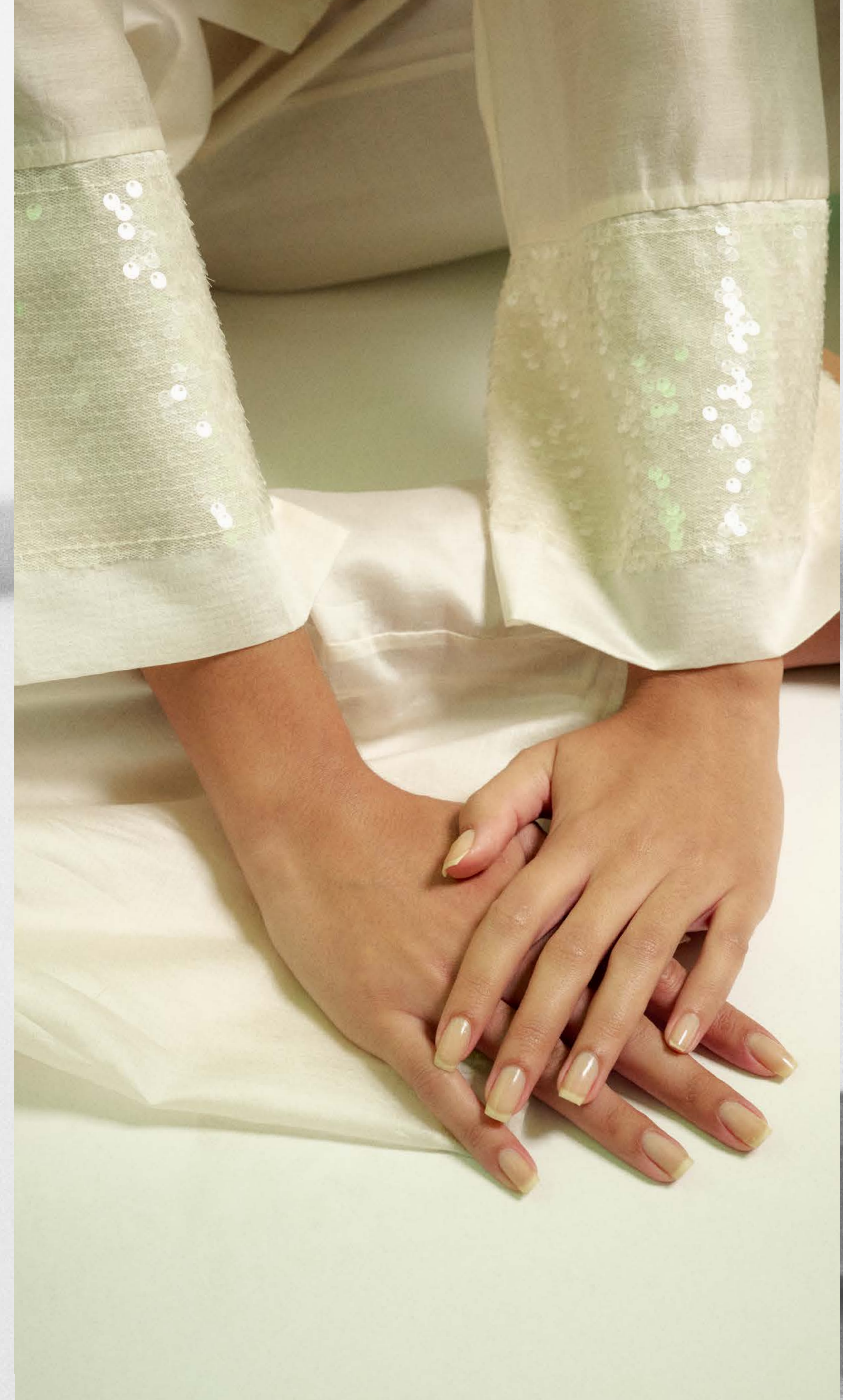




















**B-YU**<sup>®</sup>

SPRING SUMMER 2025



















# B-YU<sup>®</sup>

SPRING SUMMER 2025






















# B-YU<sup>®</sup>

SPRING SUMMER 2025



<https://www.b-yu.it/>